



PHOTO REVIEW



This column presents in pictorial form many of the more unusual radios, speakers, tubes, advertising, and other old radio-related items from our readers' collections. The photos are meant to help increase awareness of what's available in the radio collecting hobby. Send in any size photos from your collection. Photos must be sharp in detail, contain a single item, and preferably have a light-colored background. A short, descriptive paragraph **MUST** be included with each photo. Please note that receipt of photos is not acknowledged, publishing is not guaranteed, and photos are not returned.

TV7/U Tube Tester – The famous military tube tester highly prized by tube collectors. This one was manufactured by Supreme, Greenwood, MS. – *Bob Harding – Orlando, FL*

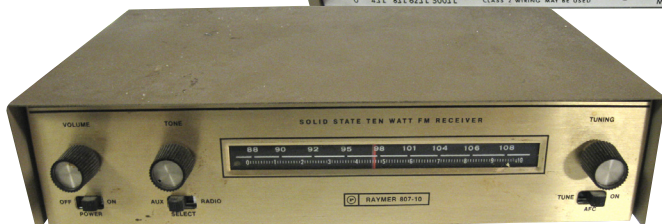


Blaupunkt model Sultan 2623 – Nice German 1950s radio made for the U.S. market covering AM, FM, and the SW bands. *Bruce Sims – Watertown, NY*



PHOTO REVIEW

Ampex model 767 Reel To Reel Tape Recorder – This model weighs a ton and has 2 remote speakers stored in the rear that can be detached. *Adam LaCorte – Salinas, CA*



Raymer model 807-10 solid state receiver – made by Trutone in Hollywood, CA. Low power rarely seen model. *Elmer Burd, Pittsburgh, PA*

Westinghouse model RA DA battery set combination – The RA was the receiver tuner and the DA was the detector amplifier. Sometimes seen as the combined RC unit. *George Geiger – Sioux Falls, SD*

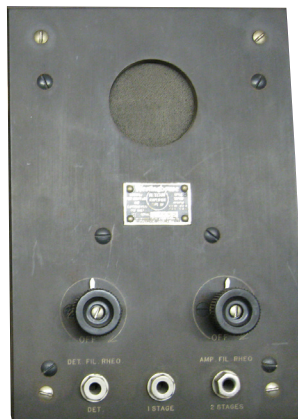


PHOTO REVIEW



DKE40 German Radio from the 1930s. Originally I thought this was a DKE38 but was identified as a DKE 40 by the people from www.radiomuseum.org. *Henry Burgess – Buffalo, NY*



Royal Radio Polleroyal battery radio from the mid 1920s. Uses five tubes. Nice graphics on the front panel. Also came in a console version. *John Addis, Oaks, MI*



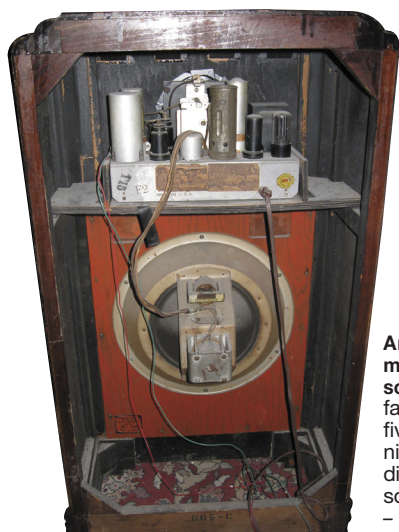
PHOTO REVIEW



Roberts model R-200 portable radio – British made and mounted on a “lazy susan” to be turned for better reception. Included is the PP9 9-volt battery. *Andy Morris – Toronto, Ontario, Canada*



Lafayette model 236A stereo amplifier – Uses 4 EL84 output tubes. Note one of the output transformers is missing. *Robert Middleton, Nashville, TN*



American Bosch model 605C console radio – Manufactured in 1936, five tubes with a nice multi-colored dial. Nice mini console. *Barry Lodge – Wheeling, WV*

