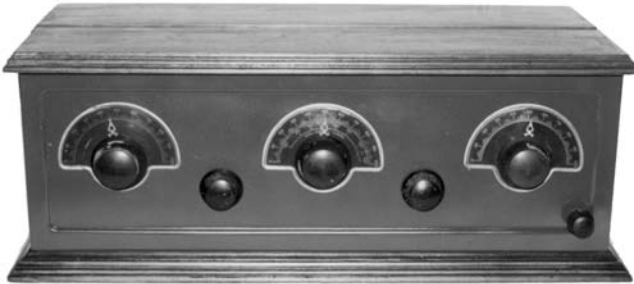




PHOTO REVIEW



This column presents in pictorial form many of the more unusual radios, speakers, tubes, advertising, and other old radio-related items from our readers' collections. The photos are meant to help increase awareness of what's available in the radio collecting hobby. Send in any size photos from your collection. Photos must be sharp in detail, contain a single item, and preferably have a light-colored background. A short, descriptive paragraph **MUST** be included with each photo. Please note that receipt of photos is not acknowledged, publishing is not guaranteed, and photos are not returned.



STEWART-WARNER MODEL 300 – This battery-operated, 5-tube receiver was manufactured in 1925 by the Stewart-Warner Speedometer Corp. of Chicago. The tubes used in the circuit are the following types: (1) 200, (3) 201, and (1) 112. The wood cabinet has a metal panel. (Clark Thrissell – Lincoln NE)

STROMBERG-CARLSON MODEL 1A – Manufactured in 1924 by the Stromberg-Carlson Co. of Rochester, New York, this 5-tube receiver uses all Type 01-A tubes. (Clark Thrissell – Lincoln, NE)



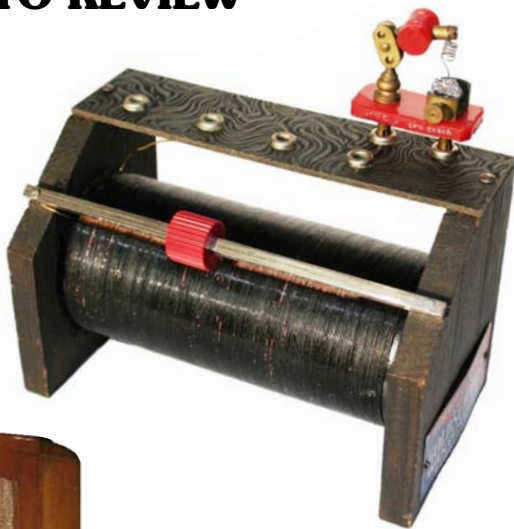
SKYROVER MODEL C-10 – Not much is known about this cathedral radio, except that it was manufactured in 1931 by Butler Brothers of Chicago, Illinois. (Clark Thrissell – Lincoln, NE)



PHOTO REVIEW

EUGEN GOLDSCHMIED CRYSTAL SET –

This company was one of the most popular dealers in Vienna in the early 1920s. The crystal is of cheap construction with a plug-in crystal detector made by Igos. (Erwin Macho – Vienna, Austria)



SILVER-MARSHALL TOMBSTONE, MODEL UNKNOWN – A tag on the front of this great looking set says “Silver-Marshall,” while the chassis ID tag says “Triangle Electric Co., Chicago, Illinois.” I was hoping that an A.R.C. reader could identify it. (Tom Ackerman, Germantown, IL)

ARVIN MODEL 44 – This metal-cabinet radio was manufactured in 1946 by Arvin Industries, Inc., of Columbus, Ohio. It is painted bright red and has a 4-tube AC/DC chassis. Other radio companies, such as Midwest, Kent, and Silvertone, sold this same set under their own trade names. (Robert Kitchel – Danville, VT)



PHOTO REVIEW

HALSON, MODEL UNKNOWN – This cathedral radio, ca 1931, was manufactured by the Halson Radio Mfg Co. of New York. One of only a few radios that the company made, its 4-tube chassis has the following tube types: 35/51, 24A, 247, and 80. Inside is a Rola speaker. I can't find this model listed or pictured anywhere. (*Robert Kitchel – Danville, VT*)



FARNSWORTH MODEL BT-1010 – This 1938 mutiband radio has 10 tubes and plays like a champ! It has very selective tuning and brings in everything. It was manufactured by the Farnsworth Television & Radio Corp. of Fort Wayne, Indiana. Yes, the same Philo Farnsworth who did so much to bring us today's modern TV. (*Dave Crocker – Mashpee, MA*)



GE MODEL K-64 – This 1933 cathedral with a metal handle on top was manufactured by the General Electric Co. of Bridgeport, Conn. Housed in a mantel clock style cabinet, the radio has a 6-tube chassis that tunes the broadcast and shortwave bands. (*Robert Kitchel – Danville, VT*)



PHOTO REVIEW



L'TATRO, MODEL UNKNOWN – L'Tatro Products Corp. of DeCorah, Iowa, manufactured this cathedral radio in 1932. It operates on 32 volts DC, and has the following tube complement: (2) Type 38, and (1) each Types 85, 78, and 6A7. I can't find this model listed or pictured anywhere. (Robert Kitchel – Danville, VT)

RCA MODEL 101 – This small, highly decorative tombstone style radio was manufactured by the Radio Corporation of America in 1933. It has a multitone wood cabinet and a 4-tube chassis tuning the broadcast and shortwave bands. (Robert Kitchel – Danville, VT)



MCMURDO SILVER MASTERPIECE VI RADIO – This 20 tube radio come with two chromed chassis - main chassis and power supply. The speaker is an 18" Jensen that weigh 70 pounds. The cabinet is the Oxford model. (Richard Rogers, Raquette Lake, NY)
